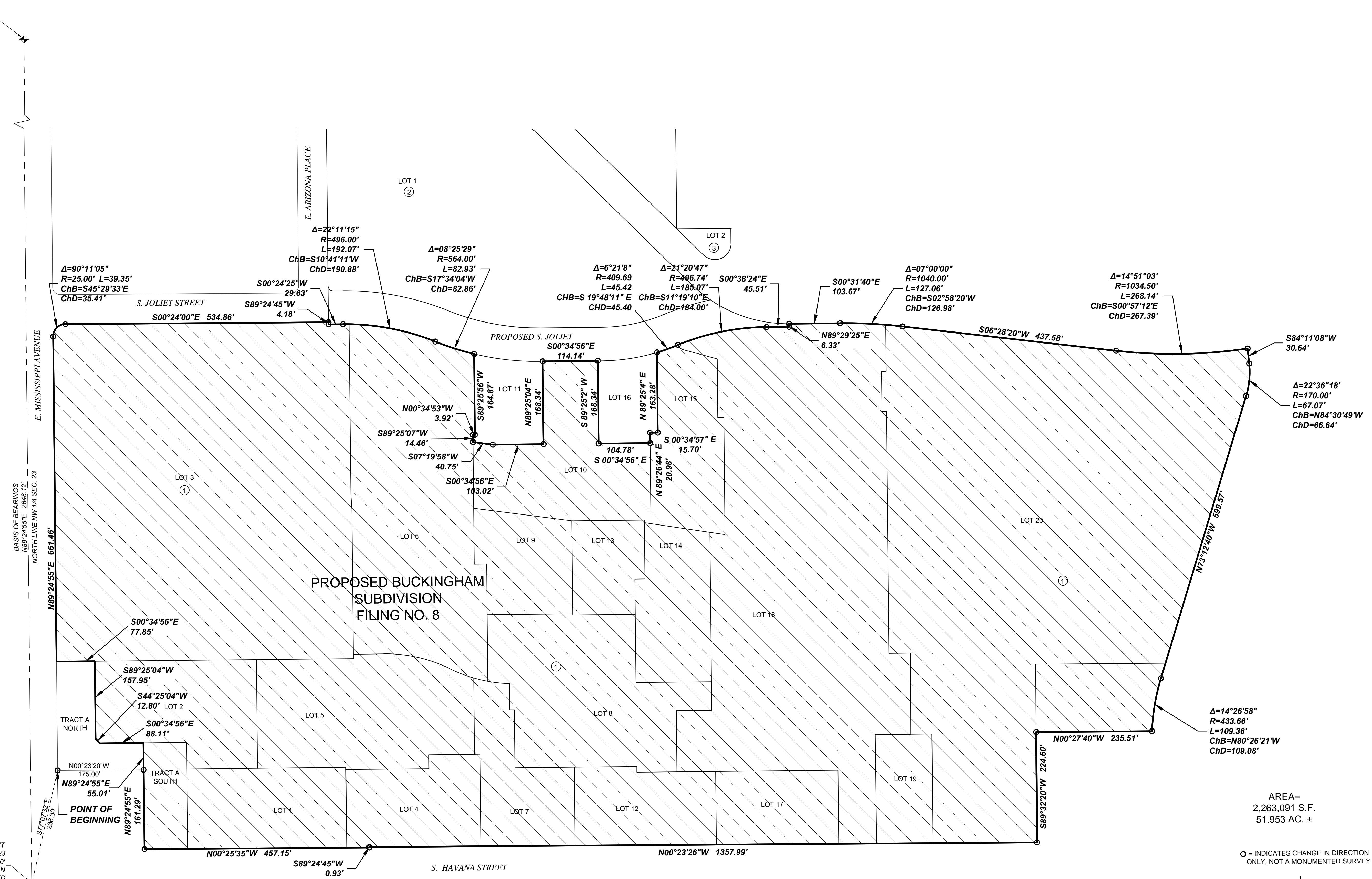


THE GARDENS ON HAVANA METROPOLITAN DISTRICT NO. 2 BOUNDARY MAP

LGID:66025

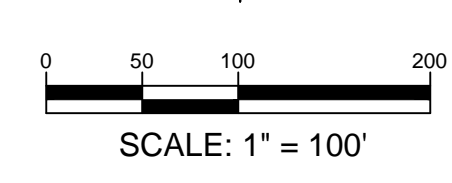
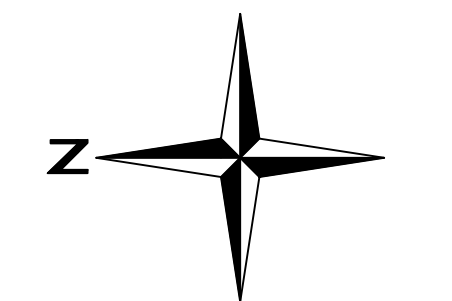


N 1/4 COR. SEC. 23
FND. 3-1/2" BRASS CAP 0.8"
BELOW EXISTING ASPHALT RD.
IN RANGE BOX STAMPED
"LS 16848"



AREA=
2,263,091 S.F.
51.953 AC. ±

O = INDICATES CHANGE IN DIRECTION
ONLY, NOT A MONUMENTED SURVEY



MDC	DRAWN	MDC	CHECKED	MDC	APPROVED

DATE	NO.	ISSUED TO CLIENT	NOTES
11/02/2013	1		

RETAIL & COMMERCIAL EXHIBIT
THE GARDENS ON HAVANA

J:\2012\12004 - Gardens on Havana\CADD\Sheet Sets\District Exhibits\2004.05 District No. 2.dwg tab: Layout1 Nov. 08, 2013 - 10:50am mcevasl